

Product Name: ANYTIMERS® Turkey Ham & Cheese Lunch Kit **Serving Size:** 4.41 oz.

Product Info



Andrew P. Lytle

Fax 516-935-1825 • www.tastybrandsk12.com

FRANKS BEEF GRMT 8/1 6"

Item # 291668

Nutrition Facts

Serving Size : 1EA(2Z,56G)

Serving Per Container : 80

Amount Per Serving

Calories : 170 Calories from Fat : 150

	Per Serving	%Daily Value*
Total Fat	16.0	25 %
Saturated Fat	6.0	30 %
Trans Fat	.5 g	
Cholesterol	35 mg	12 %
Sodium	460.0 mg	19 %
Total Carbohydrate	1.0 g	0 %
Dietary Fiber	0.0 g	0 %
Sugars	0.0 g	0 %
Protein	6 g	

	Per Srv		Per Srv
Vitamin A	0 %	Vitamin C	0 %
Calcium	0 %	Iron	4 %

*Percent Daily Values are based on a 2000 calorie diet. Your daily values may be higher or lower depending on your calorie needs.

	Calories	2,000	2,500
Total Fat	Less Than	65g	80g
Sat. Fat	Less Than	20g	25g
Cholesterol	Less Than	300g	300g
Sodium	Less Than	2400mg	2400mg
Total Carbohydrate		300mg	375mg
Dietary Fiber		25g	30g

Calories per gram

Fat 9 Carbohydrate 4 Protein 4

School Equivalents

Serving Size 1EA(2Z,56G)

Meat/Meat Alternatives 2.000

Fruit/Vegetables

Grain/Bread

Milk

Child Nutrition* USDA

*Key: USDA=Item has USDA CN label

BG=Item is in the USDA Buyers Guide for Child Nutrition Program

PFS=Manufacturer has provided a Product Formulation Statement

Product Specifications:

MFG Product	UPC	Units/Case	UnitSize/Measure	Serving/Case
108		2.0	5LB	80

Brand	Class	PBH
EISENBERG	MEATS	DELI/COOKED MEATS REFRIG

Gross Wt	Net Wt	Origin	Kosher	Child Nutrition
10.44	10.0		N	Y

Shipping Information:

LenXWidthXHt	TIHt	ShelfLife	TempZone	Wt Flag
12.5X7.5X5.75	1809	365	REFRIGERATED	N

Allergens:

Contains May contain

Handling Suggestions:

KEEP FROZEN, 0F OR BELOW, UP TO 12 MONTHS.

Benefits:

FULLY COOKED. DELICIOUS AND VERSATILE. WIDELY USED IN CONCESSIONS, FAST FOOD OPERATIONS, RESTAURANTS & DELICATESSENS. EACH IS 6" LONG. NO ARTIFICIAL TRANS FATS. GLUTEN FREE INGREDIENTS.

Additional Information:**Ingredients:**

BEEF, WATER, SALT, CONTAINS LESS THAN 2% OF THE FOLLOWING: FLAVORINGS, POTASSIUM LACTATE, SORBITOL, SODIUM DIACETATE, PAPRIKA, SODIUM ERYTHORBATE, SODIUM NITRATE, EXTRACTIVE OF PAPRIKA.



Information concerning nutritional values and product ingredients, including major food allergens, is obtained solely from the vendor or manufacturer of the specific product, without any edits or filters by PERFORMANCENet or PFG. In most cases, the vendor or manufacturer submits nutritional values to PFG as rounded values and not actual values; therefore, laboratory test results for nutritional content of multi-ingredient menu items may be different from the calculated values using the data provided. PFG does not perform any independent evaluation, review, or screening of the vendor's or manufacturer's compliance with federal, state, or local labeling requirements, or other claims. PERFORMANCENet and PFG provide this information solely as a courtesy, and make no representation concerning its accuracy. Always read the product label before use. PERFORMANCENet and PFG do not warrant or guarantee the information provided by the third party information content providers and expressly disclaim any liability arising therefrom.

Flame Grilled Beef Pattie CN

Item #: Pieces Per Case: Piece Size (oz.): Case Weight (lb.):
1-155-820-20 250 1.95 30.47

Data Generated: 1/8/2019

Data Valid As Of: 9/15/2018

Description: Fully cooked, lightly seasoned beef. Soy added. Sprocket shape with charmarks. Sleeve pack. CN labeled. Commodity processed product.

Features & Benefits: Great for Kids-CN labeled, beef patty with soy. Fully Cooked with a Fresh Grilled Flavor-flamegrilled for a freshly grilled taste; charmarks for a freshly grilled appearance; consistent taste, product size and quality; sprocket shape; individually quick frozen (IQF) to lock in freshness. High Quality USDA-Approved Raw Materials-100% USDA-inspected beef. Easy Preparation-soy and seasonings added to enhance flavor and value; for menus with food cost restrictions; holds better than burgers cooked from raw; reduce labor costs; less waste; minimal cleanup required; minimal grease, yield loss, shrinkage. Reduced Labor Costs-easy to prepare-just heat on a flat top grill, in a conventional or convection oven or in a microwave; no thawing necessary-heat from frozen; easy cleanup. Decreased Food Safety Concerns-fully cooked to USDA HACCP requirements utilizing calibrated thermometers; enhanced food safety; reduces cross contamination risk in your kitchen.

Technical Label Name: Flamebroiled Beef Patties Caramel Color Added

Brand: Advance Pierre

Packaging Type: BULK-SLV

Master Case GTIN: 00880760037238

Master Case Gross Weight: 32.57600

Master Case Length: 20.62500

Master Case Width: 13.18750

Master Case Height: 11.88000

Master Case Cube: 1.86990

Cases/Layer: 7

Cases/Pallet: 21

Layers/Pallet: 3

Frozen Shelf Life (days): 455

Refrigerated Shelf Life (days): 0

CN Credit: 1.5 OZ MMA BEEF

Preparation Method:

Conventional Oven: From frozen state sleeve pack preparation put a few small holes in top of bag. Place entire bag intact on sheet pan in preheated oven 375-400 degrees f for 60 minutes. Remove from oven and let stand 3 minutes before opening bag. Always cook product to an internal temperature of 165 degrees f.

Convection Oven: From frozen state sleeve pack preparation put a few small holes in top of bag. Place entire bag intact on sheet pan in preheated oven 375-400 degrees f for 30-40 minutes. Remove from oven and let stand 3 minutes before opening bag. Always cook product to an internal temperature of 165 degrees f.

Ingredient Statement: INGREDIENTS: Ground Beef (Not More Than 20% Fat), Water, Textured Vegetable Protein Product [Soy Protein Concentrate, Caramel Color, Zinc Oxide, Niacinamide, Ferrous Sulfate, Copper Gluconate, Vitamin A Palmitate, Calcium Pantothenate, Thiamine Mononitrate (B1), Pyridoxine Hydrochloride (B6), Riboflavin (B2), Cyanocobalamin (B12), Salt, Sodium Phosphate, Caramel Color. CONTAINS: Soy

CN Equivalency Statement: 1-155-820-20

Master-Case-Labels: 1-155-820-20



Part of the Tyson
Foods Family.

Nutrition Facts:

Serving Size: 1.95 OZ (55 g)
Servings Per Container: 250

Calories / Calories from Fat: 90 / 40

% Daily Value **

Total Fat	4.5 g	7%
Saturated Fat	1.5 g	8%
Trans Fat	0 g	
Cholesterol	25 mg	8%
Sodium	210 mg	9%
Total Carbohydrate	1 g	0%
Dietary Fiber	1 g	4%
Sugars	0 g	
Protein	11 g	
Vitamin A		0%
Vitamin C		0%
Calcium		2%
Iron		8%

** Percent Daily values are based on a 2,000 calorie diet. Your daily values may be higher or lower depending on your calorie needs.

Mini Twin Cheeseburger On A Whole Grain Bun

Item #: Pieces Per Case: Piece Size (oz.): Case Weight (lb.):
1177 96 4.70 28.20



Data Generated: 1/8/2019

Data Valid As Of: 9/25/2018

Description: Fully cooked, mini beef pattie with onion and a slice of American cheese on a mini whole grain bun. Soy added. Char marked. Two sandwiches packaged together in Mylar film wrap. CNlabeled.

Features & Benefits: Convenient--individually wrapped; great for grab-and-go. Great for Kids--CN labeled; formulated to help meet the new USDA regulations.

Technical Label Name: Fully Cooked Flamebroiled Beef Patty with Onion & American Cheese Mini Twin Sandwich on a WG Bun

Brand: Pierre

Packaging Type: BULK-BAG

Master Case GTIN: 00071421011777

Master Case Gross Weight: 30.64000

Master Case Length: 23.06300

Master Case Width: 15.31300

Master Case Height: 9.12500

Master Case Cube: 1.86490

Cases/Layer: 5

Cases/Pallet: 45

Layers/Pallet: 9

Frozen Shelf Life (days): 270

Refrigerated Shelf Life (days): 7

CN Credit: 2 OZ MMA BEEF

Equivalent Grain: 2.00

Preparation Method:

To Thaw: For best results, heat from thawed state. Thaw frozen sandwiches in refrigerator. Sandwiches can be stored in refrigerator for 14 days.

Convection Oven: From thawed state: preheat oven to 275 degrees f. Heat sealed/wrapped sandwich (es) for 18-20 minutes. (Do not heat above 275 degrees f).

Microwave: From thawed: microwave (1000 watts) on full power for 1 minute. Times may vary.

Ingredient Statement: INGREDIENTS: FULLY BAKED WHOLE GRAIN BUN: Water, Whole Wheat Flour, Enriched Wheat Flour (Wheat Flour, Niacin, Reduced Iron, Thiamine Mononitrate, Riboflavin, Enzyme, Folic Acid), Sugar. CONTAINS 2% OR LESS OF: Yeast (Yeast, Sorbitan Monostearate, Ascorbic Acid), Soybean Oil, Salt, Monoglycerides With Ascorbic Acid And Citric Acid (Antioxidants), Fumaric Acid, Calcium Propionate (Preservative), Calcium Sulfate, Enzymes, Wheat Starch, Ascorbic Acid. FULLY COOKED FLAMEBROILED BEEF AND ONION PATTY: Ground Beef (Not More Than 20% Fat), Water, Onions, Textured Vegetable Protein Product [Soy Protein Concentrate, Caramel Color, Zinc Oxide, Niacinamide, Ferrous Sulfate, Copper Gluconate, Vitamin A Palmitate, Calcium Pantothenate, Thiamine Mononitrate (B1), Pyridoxine Hydrochloride (B6), Riboflavin (B2), Cyanocobalamin (B12)], Seasoning (Hydrolyzed Corn Protein, Dextrose, Salt, Flavorings), Potassium Phosphate, Caramel Color. SHARP PASTEURIZED PROCESS AMERICAN CHEESE: Cultured Milk, Water, Cream, Sodium Phosphate, Salt, Lactic Acid, Sorbic Acid (Preservative), Artificial Co Sodium Citrate, Enzymes. CONTAINS: MILK, SOY, WHEAT

CN Equivalency Statement: 1177

Master-Case-Labels: 1177

Nutrition Facts:

Serving Size: 4.70 OZ (132 g)
Servings Per Container: 96

Calories / Calories from Fat: 330 / 120

% Daily Value **

Total Fat	14 g	22%
Saturated Fat	6 g	30%
Trans Fat	0.5 g	
Cholesterol	40 mg	13%
Sodium	480 mg	20%
Total Carbohydrate	36 g	12%
Dietary Fiber	4 g	16%
Sugars	7 g	
Protein	17 g	
Vitamin A		6%
Vitamin C		25%
Calcium		15%
Iron		15%

** Percent Daily values are based on a 2,000 calorie diet. Your daily values may be higher or lower depending on your calorie needs.

The trans fats reported on this product's nutrition facts panel are naturally occurring.



Jones Dairy Farm Product Spec. Sheet

Item: 018811 1.50 oz. GB Chicken Patty - 12 lb. case - GFS Net Wt Item

Packaging	Case	Pallet	
GTIN	00093901588517	N/A	
Net Weight	12.00 LB	840 LB	
Gross Weight	12.85 LB	900 LB	Without Pallet
Height	7.15 IN	55.55 IN	With Pallet
Width	9.80 IN	40.00 IN	
Length	17.25 IN	48.00 IN	
Volume	06995 Cubic ft	61.7222 Cubic ft	
Count per Case	128 Cooked Patties	TI 10 HI 7	Cases 70

Product	Product Type	Cooked Patties	
Shelflife	Frozen	365	Days
Thickness		8 - 12	mm
Width or Diameter		3 3/8 - 3 7/8	IN
Length		N/A	N/A
Weight		40.5 - 44.2	OZ

Nutritional

Serving Size grams	42	Total Fat grams	6	Sugar grams	0
Serving Size Household	1 Patty	Saturated Fat grams	1.5	Protein grams	6
		Trans Fat grams	0	Vitamin A Percent DV	0
		Cholesterol milligrams	40	Vitamin C Percent DV	2
Servings per container	About 128	Sodium milligrams	270	Calcium Percent DV	0
Calories kcal	80	Total Carbohydrate grams	0	Iron Percent DV	2
Calories From Fat kcal	50	Dietary Fiber grams	0		

Ingredients Chicken, Water, Salt, Spices, Dextrose, Sugar, Dried Parsley.

Allergen is present if followed by a YES.

Milk	No	Fish	No	Shellfish	No	Tree Nuts	No	Sulfites	No
Eggs	No	Wheat	No	Peanuts	No	Soybeans	No		



FC BREADED CHICKEN DRUMSTICKS

Nutrition Panels

Nutrition Facts	
Serving Size 1 PIECE (80g) Servings Per Container About 108	
Amount Per Serving	
Calories 190	Calories from Fat 100
% Daily Value *	
Total Fat 11g	17%
Saturated Fat 2.5g	13%
Trans Fat 0g	
Polyunsaturated Fat 4g	
Monounsaturated Fat 3.5g	
Cholesterol 50mg	17%
Sodium 450mg	19%
Total Carbohydrate 5g	2%
Dietary Fiber 1g	4%
Sugars 0g	
Protein 16g	32%
Vitamin A	2%
Vitamin C	0%
Calcium	2%
Iron	6%
* Percent Daily Values are based on a 2,000 calorie diet.	

Wild Mike's Cheese Bites Bulk

Item Code: 11003

Description:

Wild Mike's premium quality Cheese Bites (11003) are fresh baked with 51% Whole Grain Rich flour and filled with tasty mozzarella cheese the kids are sure to love!

Per the Child Nutrition Meal Pattern Requirements, Each serving provides:

- Meat/Meat Alternate equivalent = .5
- Bread Alternate equivalent = .5

Baking Instructions:

Preheat oven to 350 degrees. Place frozen breadsticks on baking sheet.

Bake 6-8 minutes. Let stand 1-2 minutes before serving due to cheesy filling being hot.

Due to oven variances, times and temperatures may require adjustments.

Nutrition Facts

Serving Size (28g)

Calories		70
Calories from Fat		30
Amount Per Serving		% Daily Value
Fat		3g 5%
Saturated		1g 5%
Trans		0g 0%
Cholesterol		5mg 2%
Sodium		135mg 6%
Carbohydrate		7g 2%
Fiber		1g 4%
Sugars		0g
Protein		4g
Vitamin A	2%	• Vitamin C 0%
Calcium	6%	• Iron 2%

*Percent Daily Values are based on a 2,000 calorie diet. Your daily values may be higher or lower depending on your calorie needs:

		Calories:	2,000	2,500
Total Fat	Less than	65g	80g	
Saturated Fat	Less than	20g	25g	
Cholesterol	Less than	300mg	300mg	
Sodium	Less than	2,400mg	2,400mg	
Total Carbohydrate		300g	375g	
Dietary Fiber		25g	30g	

Calories per gram:
Fat 9 • Carbohydrate 4 • Protein 4

INGREDIENTS: PART SKIM MOZZARELLA CHEESE ([PASTEURIZED MILK, CULTURES, SALT, ENZYMES]), MODIFIED FOOD STARCH), WATER, WHOLE GRAIN WHOLE WHEAT FLOUR, ENRICHED FLOUR (WHEAT FLOUR, NIACIN, REDUCED IRON, THIAMINE MONONITRATE, RIBOFLAVIN, FOLIC ACID), SUGAR, SOYBEAN OIL, GLUTEN, YEAST, FERMENTED WHEAT FLOUR, SALT. CONTAINS: MILK, WHEAT & SOY.

GTIN : 00078642110036

Gross Weight : 16

Net Weight : 14

Pack : 240/1.0oz

Pallet Pattern : 14x8=112

Case Dimensions : 19.75x6.5x9.75

Case Cube : .72

Best if Used By : 6 months

Commodity Draw Down/Case :
7.50 lbs.



Manufacturer:

S.A. & Piazza
Associates, LLC.
THE PIZZA EXPERTS

15815 SE Piazza Avenue, PO Box 1603, Clackamas, OR 97015
p: 503-657-3123 f: 503-657-1784 www.sapiazza.com

Information contained in this document is believed to be accurate and offered in good faith for the benefit of the customer. Nutrition data is calculated and offered for informational purposes; some variation can occur depending on several factors. This document may contain proprietary confidential, trade secret or privileged information. Any unauthorized review, use, disclosure or distribution is prohibited and may be a violation of law.

 SQF
Updated: 7/01/2016



FACT SHEET

The following nutrient information for our product is based on the certified portion size as stated on CN Label.

PROCESSOR NAME: Pilgrim's Pride Corp. - Gold Kist Farms Brand

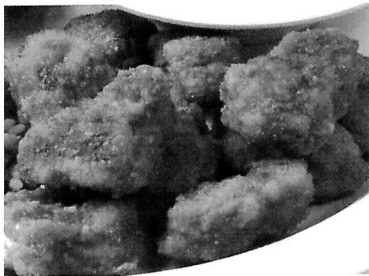
PRODUCT NAME: CN WG Breaded Chicken Smackers

CODE NUMBER: 110452 Case Wt: 30# Donated Food/Case: 29.975# Standard Yield: 100%

SERVING SIZE: 4.3 oz Servings/Case 108 Contribution: 2 MMA Serving 1 Grain Serving*

*Calculation for grains based on 16 grams creditable per ounce.

UPC #: 75632104525 Gross Cs/Wt: 31.95 Case Dim: 17.1 L x 13.1 W x 12.6 H Cube: 1.63 Pallet: Ti 8 Hi 6 Cs/Pallet: 48 Shelf Life 365 days



BID DESCRIPTIONS

Whole Grain breaded fully cooked CN labeled popcorn chicken produced from USDA 100103 natural proportion white and dark meat commodity chicken. No added soy protein. Popcorn to be batter breaded with Whole Grain and enriched wheat flour breaded. 10 popcorn pieces @ 0.43 oz each guaranteed by CN label to provide 2 ounces meat/meat alternative and 1 grain servings. Product to provide zero grams trans fats.

NUTRIENT INFORMATION

*Percent Daily Values based on a 2,000 calorie diet.

Basic Components

Calories (kcal)	260	Carbohydrates (g)	17
Fat (g)	13	Dietary Fiber (g)	3
Saturated Fat (g)	3	Total Sugars (g)	0
Trans Fatty Acid (g)	0	Protein (g)	19
Cholesterol (mg)	70		

Vitamins*

Vitamin A	4%
Vitamin C	0%

Minerals*

Sodium (mg)	550
Calcium	2%
Iron	8%

Camden Robbins R.D., SNS

Camden Robbins, R.D., SNS K-12 School Nutritionist

11/29/18

Date

Primary Plant Production -Waco, TX CN #086399

Additional Plants CN #086401



Fully Cooked

Whole Grain Large Popcorn Style Chicken

Breaded Popcorn Shaped Chicken Patties

INGREDIENTS: Chicken, Water, Modified Food Starch, Reduced Sodium Sea Salt (Sea Salt, Potassium Chloride, Rice Flour), Sodium Phosphates. **Breaded With:** Whole Wheat Flour, Salt, Enriched Wheat Flour (Enriched With Niacin, Reduced Iron, Thiamine Mononitrate, Riboflavin, Folic Acid), Disodium Inosinate and Disodium Guanylate, Onion Powder, Spice, Yeast, Garlic Powder, Maltodextrin, Sugar, Soy Sauce (Fermented Soybeans, Wheat, Salt), Extractives of Paprika, Yeast Extract. **Battered With:** Water, Whole Wheat Flour, Modified Corn Starch, Salt, Onion Powder, Garlic Powder, Nonfat Milk, Whey, Disodium Inosinate and Disodium Guanylate. **Predusted With:** Whole Wheat Flour, Modified Corn Starch, Salt, Spice Extractive.

CONTAINS: MILK, SOY AND WHEAT

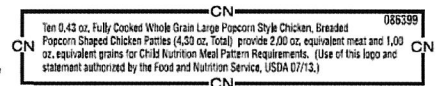
**"Copy not for documenting
Federal Meal Requirements"**

Distributed By: Pilgrim's Pride Corporation
1770 Promontory Circle, Greeley, CO 80634 800-321-1470 www.poultry.com
Gold Kist Farms is a registered trademark of Pilgrim's Pride Corporation
Product of USA





HEATING INSTRUCTIONS FROM FROZEN: Conventional Oven for 10-12 minutes at 350°F;
Convection Oven for 6-8 minutes at 350°F. Appliances vary, adjust cook times accordingly.

110452



(01)1 00 75632 10452 2

Tyson Whole Grain Chicken Rings, Breaded, .74 Oz, Cooked, Frozen, 125 Ct Bag, 6/Case

Item Number: 281771  

This chopped and formed blend of white and dark meat chicken features a rich, 51 percent whole grain breading and a unique ring shape.

- Child Nutrition labeled
- Fully cooked to save labor, time, and minimize food safety risk from handling
- No hormones added: Federal regulations prohibit the use of hormones in the raising and production of pork or poultry.



Case (6/125 Count Bag)

157

Nutrition

Based On:

Rounding:

Ingredients

Chicken, whole wheat flour, water, isolated soy protein, contains 2% or less of the following: brown sugar, canola oil, carrot powder, citric acid, dried garlic, dried onion, dried yeast, garlic powder, maltodextrin, natural flavor, onion powder, paprika extract (color), rosemary extract (to protect flavor), salt, spice, sugar, torula yeast, turmeric extract (color), vegetable stock (carrot, onion, celery), wheat gluten, yeast extract. Breading set in vegetable oil. **COMMON ALLERGENS PRESENT: WHEAT, SOY.** Prior to consuming the product, individuals with severe food allergies should confirm the ingredient information on the actual label of the product. Nutrition and Ingredient statement updated July 2019. This ingredient and nutrition information was provided by the third-party product manufacturer and/or supplier and was not in any way created or verified by GFS. The information is being passed on as a courtesy and for informational purposes only. GFS in no way guarantees the accuracy or completeness of this information and NO WARRANTIES ARE MADE OR IMPLIED; ALL IMPLIED WARRANTIES OF MERCHANTABILITY AND FITNESS FOR A PARTICULAR PURPOSE ARE EXPRESSLY EXCLUDED.

Nutrition Facts

Serving Size 4 Pc (83g)	
Amount Per Serving	
Calories 240	Calories From Fat 126
	% Daily Value *
Fat 14g	22%
Saturated Fat 2.5g	12%
Trans Fat 0g	
PolyUnsat. Fat	n/a
MonoUnsat Fat	n/a
Cholesterol 40mg	13%
Sodium 360mg	15%
Potassium 500mg	14%
Carbohydrates 12g	4%
Fiber 1g	4%
Sugar 1g	
Protein 17g	34%
Vitamin C n/a Calcium 2% Iron 10%	
* Based on a 2000 calorie diet	
Calories Per Gram:	
Fat: 9 Carbohydrates: 4 Protein: 4	

CHICKEN PATTY TNDRLN SHAPED BRD

Item # 470078

Nutrition Facts

Serving Size : 3EA(3Z,87G)

Serving Per Container : 156

Amount Per Serving

Calories : 203 Calories from Fat : 90

	Per Serving	%Daily Value*
Total Fat	11	17 %
Saturated Fat	2	10 %
Trans Fat	0 g	
Cholesterol	47 mg	16 %
Sodium	393 mg	16 %
Total Carbohydrate	12 g	4 %
Dietary Fiber	2 g	8 %
Sugars	0 g	0 %
Protein	14 g	

	Per Srv		Per Srv
Vitamin A	0 %	Vitamin C	1 %
Calcium	2 %	Iron	10 %

*Percent Daily Values are based on a 2000 calorie diet. Your daily values may be higher or lower depending on your calorie needs.

	Calories	2,000	2,500
Total Fat	Less Than	65g	80g
Sat. Fat	Less Than	20g	25g
Cholesterol	Less Than	300g	300g
Sodium	Less Than	2400mg	2400mg
Total Carbohydrate		300mg	375mg
Dietary Fiber		25g	30g

Calories per gram

Fat 9 Carbohydrate 4 Protein 4

School Equivalents

Serving Size 3EA(3Z,87G)

Meat/Meat Alternatives 2

Fruit/Vegetables

Grain/Bread 1

Milk

Child Nutrition* USDA

*Key: USDA=Item has USDA CN label

BG=Item is in the USDA Buyers Guide for Child Nutrition Program

PFS=Manufacturer has provided a Product Formulation Statement

Product Specifications:

MFG Product	UPC	Units/Case	UnitSize/Measure	Serving/Case
622100	10075632221007	6.0	5LB	156

Brand	Class	PBH
GOLD KIST	FROZEN FOOD PROCESS	ENTREES/SIDEDISHES FROZEN

Gross Wt	Net Wt	Origin	Kosher	Child Nutrition
32.06	30.0		N	Y

Shipping Information:

LenXWidthXHt	TIHl	ShelfLife	TempZone	Wt Flag
19.5X13.0X11.25	707	365	FROZEN	N

Allergens:

Contains May contain

Milk, Soy, Wheat

Handling Suggestions:

Benefits:

Additional Information:

Ingredients:

Information concerning nutritional values and product ingredients, including major food allergens, is obtained solely from the vendor or manufacturer of the specific product, without any edits or filters by PERFORMANCENet or PFG. In most cases, the vendor or manufacturer submits nutritional values to PFG as rounded values and not actual values; therefore, laboratory test results for nutritional content of multi-ingredient menu items may be different from the calculated values using the data provided. PFG does not perform any independent evaluation, review, or screening of the vendor's or manufacturer's compliance with federal, state, or local labeling requirements, or other claims. PERFORMANCENet and PFG provide this information solely as a courtesy, and make no representation concerning its accuracy. Always read the product label before use. PERFORMANCENet and PFG do not warrant or guarantee the information provided by the third party information content providers and expressly disclaim any liability arising therefrom.

Mandarin Orange Chicken Jr.

Product Code: 8-52724-15555-5

Ling's
5th Taste®

Crispy chicken, glazed with our zesty Mandarin Orange Sauce

Our products do not contain MSG, artificial coloring or flavoring, peanuts, peanut oil, or lard and are zero trans fat.



Pack size: 6 - 5 lb. Chicken • 6 - 36 oz. Sauce

Ingredients:

Chicken: Boneless, skinless chicken leg meat, water, cornstarch, white whole grain wheat flour, soybean oil, liquid whole eggs, salt, white pepper powder, ground ginger, garlic, green onion.

Sauce: Water, sugar, vinegar, soy sauce (soybeans, wheat flour, water, salt, straw mushroom extractives), modified starch, mandarin orange juice and peel, chili powder, garlic, ginger, green onion.

Allergens: Egg products, soy, wheat, and citrus

Made in the USA

Child Nutrition

Meat/Meat Alternate 2.88 oz. raw chicken

Yield 2 oz. cooked chicken per portion

Recommended serving size:

3.6 oz. = 2.5 oz. chicken and 1.1 oz. sauce

Approximate servings per case: 192

This 3.6 oz. serving provides 2 meat/meat alternate according to the Food Buying Guide for Child Nutrition Programs.

I certify this information is true and correct:

Lore Espelding

Vice President

01/03/14

Nutrition Facts

Serving Size 3.6 oz. (100g)

Serving Per Container 192

Amount Per Serving

Calories 150 Calories from Fat 25

% Daily Values*

Total Fat 3g **5%**

Saturated Fat 0.5g **3%**

Trans Fat 0g

Cholesterol 40mg **13%**

Sodium 280mg **12%**

Total Carbohydrate 19g **6%**

Dietary Fiber 0g **0%**

Sugars 10g

Protein 11g **22%**

Vitamin C 2% Iron 4%

* Percent Daily Values are based on a 2,000 calorie diet. Your Daily Values may be higher or lower depending on your calorie needs.

	Calories	2,000	2,500
Total Fat	Less than	65g	80g
Sat Fat	Less than	20g	25g
Cholesterol	Less than	300mg	300mg
Sodium	Less than	2400mg	2400mg
Total Carbohydrate		300g	375g
Dietary Fiber		25g	30g

Preparation

Place a single layer of chicken on baking sheet. Heat at 400° for 16-20 minutes or until golden brown, and internal temperature reaches 165°. Heat sauce in steamer, low boil in the bag, or microwave. Add sauce to chicken just prior to serving. Mix thoroughly to cover all chicken pieces.

Shelf life

1 year frozen

For further information please call, 909.593.4797

Reduced Fat Beef Spaghetti Sauce

JTM Item CP5578
Number:

Product Title:

SPAGHETTI SAUCE WITH BEEF

Nutritional Information:	CN Serving Size	100g Serving
Serving Size (oz.)	5.60	3.53
Serving Size (g)	158.8	100.0
Servings Per Case	85	136
Calories	167	105
Calories from Fat	66	41
Protein (g)	15	9
Carbohydrates (g)	9	6
Fiber (g)	2	1
Total Fat (g)	7	5
Saturated Fat (g)	2.8	1.7
Trans Fat (g)*	0.0	0.0
Cholesterol (mg)	55	34
Sodium (mg)	290	183
Sugar (g)	7	4
Vitamin A (IU)	647	407
Vitamin C (mg)	19	12
Calcium (mg)	44	28
Iron (mg)	2	2

Product Specifications:

UPC (GTIN)	10049485055782
Case Pack	30# 6 Bags
Net Weight	30.000 lbs
Gross Weight	31.300 lbs
Case Length	15.440 in
Case Width	11.810 in
Case Height	6.880 in
Case Cube	0.730 ft
TixHi	10x7
Shelf Life	730 Days

*Contains 0 grams artificial trans fat

Ingredients:

GROUND BEEF (no more than 20% fat), WATER, TOMATO PASTE, ONIONS, SUGAR, SEASONING (potassium chloride, natural flavor [contains maltodextrin]), SEASONING (sugar, onion, spice, garlic), SALT, SPICE, DEHYDRATED GARLIC, FULLY REFINED SOYBEAN OIL, CITRIC ACID, DEHYDRATED PARSLEY.

CN Statement: CN ID Number: 079213

This 30 lb. case provides 85 servings 5.60 oz each. Each 5.60 oz serving (by weight) of Spaghetti Sauce with Beef provides 2.00 oz equivalent meat and 1/2 cup red/orange vegetable for Child Nutrition Meal Pattern Requirements. (Use of this logo and statement authorized by the Food and Nutrition Service, USDA 03-11.)

Allergens:

**This Product is Gluten-Free

Preparation:

KEEP FROZEN Place sealed bag in a steamer or in boiling water. Heat Approximately 45 minutes or until product reaches serving temperature. CAUTION: Open bag carefully to avoid being burned.

July 05, 2017

Reduced Fat, Reduced Sodium Beef Taco Filling

JTM Item CP5250
Number:

Nutritional Information:	CN Serving Size	100g Serving
Serving Size (oz.)	3.17	3.53
Serving Size (g)	89.9	100.0
Servings Per Case	151	136
Calories	111	124
Calories from Fat	44	49
Protein (g)	13	14
Carbohydrates (g)	5	5
Fiber (g)	2	2
Total Fat (g)	5	5
Saturated Fat (g)	1.8	2.0
Trans Fat (g)*	0.0	0.0
Cholesterol (mg)	35	38
Sodium (mg)	292	325
Sugar (g)	2	2
Vitamin A (IU)	645	718
Vitamin C (mg)	5	6
Calcium (mg)	41	45
Iron (mg)	2	2

Product Specifications:

UPC (GTIN)	10049485052507
Case Pack	30# 6 Bags
Net Weight	30.000 lbs
Gross Weight	31.300 lbs
Case Length	15.310 in
Case Width	11.880 in
Case Height	6.880 in
Case Cube	0.720 ft
TixHi	10x7
Shelf Life	730 Days

*Contains 0 grams artificial trans fat

Product Title:

TACO FILLING WITH BEEF AND TEXTURED VEGETABLE PROTEIN
CAMEL COLOR ADDED

Ingredients:

GROUND BEEF (no more than 20% fat), WATER, TOMATO PASTE, TEXTURED VEGETABLE PROTEIN (soy protein concentrate, caramel color), TEXTURED VEGETABLE PROTEIN (soy flour, caramel color), CONTAINS LESS THAN 2% OF SEASONING (potassium chloride, flavor [contains maltodextrin]), DEHYDRATED ONION, SALT, CHILI PEPPER, DEHYDRATED GARLIC, CAMEL COLOR, VINEGAR, SPICES, PAPRIKA EXTRACT.

CN Statement: CN ID Number: 083917

This 30 lb. case provides 151 servings 3.17 oz each. Each 3.17 oz serving (by weight) of Taco Filling provides 2.00 oz equivalent meat/meat alternate and 1/8 cup red/orange vegetable for Child Nutrition Meal Pattern Requirements. (Use of this logo and statement authorized by the Food and Nutrition Service, USDA 07-12.)

Allergens:

Soy,
**This Product is Gluten-Free

Preparation:

KEEP FROZEN Place sealed bag in a steamer or in boiling water. Heat Approximately 45 minutes or until product reaches serving temperature. CAUTION: Open bag carefully to avoid being burned.

July 05, 2017

Reduced Sodium Beef (4=2) Meatballs

JTM Item CP5035
Number:

Product Title:

COOKED BEEF MEATBALLS
(CARAMEL COLOR ADDED)

Nutritional Information:	CN Serving Size	100g Serving
Serving Size (oz.)	2.60	3.53
Serving Size (g)	73.7	100.0
Servings Per Case	184	136
Calories	151	206
Calories from Fat	82	112
Protein (g)	12	16
Carbohydrates (g)	5	7
Fiber (g)	1	1
Total Fat (g)	9	12
Saturated Fat (g)	3.5	4.8
Trans Fat (g)*	0.6	0.8
Cholesterol (mg)	36	49
Sodium (mg)	216	293
Sugar (g)	2	3
Vitamin A (IU)	5	7
Vitamin C (mg)	1	1
Calcium (mg)	64	87
Iron (mg)	2	2

Ingredients:

GROUND BEEF (no more than 20% fat), WATER, TEXTURED VEGETABLE PROTEIN (soy protein concentrate, caramel color), BREAD CRUMBS (wheat flour, enriched, malted, bromated [wheat flour, malted barley flour, niacin, reduced iron, potassium bromate, thiamine mononitrate, riboflavin, folic acid], water, palm oil, salt, sweet whey, sugar, yeast [natural yeast, sorbitan monostearate, ascorbic acid], calcium propionate, sodium metabisulfite), NONFAT DRY MILK, SEASONING (potassium chloride, natural flavor [contains maltodextrin]), DEHYDRATED ONION, SUGAR, SALT, GRATED ROMANO CHEESE (sheep's milk, cheese culture, salt, enzymes, calcium propionate), SPICE, CARAMEL COLOR, DEHYDRATED GARLIC.

CN Statement: CN ID Number: 073048

Four 0.65 oz Cooked Beef Meatballs provide 2.00 oz equivalent meat/meat alternate for Child Nutrition Meal Pattern Requirements. (Use of this logo and statement authorized by the Food and Nutrition Service, USDA 09-08.)

Allergens:

Milk, Soy, Wheat

Product Specifications:

UPC (GTIN)	10049485050350
Case Pack	6 Bags
Net Weight	30.000 lbs
Gross Weight	31.500 lbs
Case Length	19.810 in
Case Width	11.310 in
Case Height	10.500 in
Case Cube	1.360 ft
TixHi	8x4
Shelf Life	548 Days

*Contains 0 grams artificial trans fat

Preparation:

KEEP FROZEN CONVECTION OVEN: Add frozen meatballs or crumbles to sauce, cover pan and heat in convection oven approximately 30 minutes at 375 degrees F. STOVE TOP: Add frozen meatballs or crumbles to sauce. Simmer in covered pan for approximately 40 minutes at 180-200 degrees F.

July 05, 2017

Pork Sausage Pattie

Item #: 3750

Product Description: Fully cooked, all meat, pork sausage pattie. CN labeled. Commodity processed product.

Technical Name: Fully Cooked Pork Sausage Patties Caramel Color Added

Brand: CLASSICS

Product Details

Data Generated: 7/6/2017
Data Valid As Of: 6/20/2017
Packing Type: BULK-LINER
Pieces Per Case: 250
Portion Size (oz.): 1.20
Case Net Weight (lb.): 18.75

Case Dimensions: Width: 13.00
Length: 19.88
Height: 6.63
Case Cube: 0.99

Cases / Pallet: 42
Case TiHi: 7 x 6

Credit (CN): 1 OZ MMA PORK
Equivalent Grain: -

Ingredients:

INGREDIENTS: GROUND PORK (NOT MORE THAN 20% FAT), SEASONING (DEXTROSE, FLAVORINGS, HYDROLYZED CORN PROTEIN, CARAMEL COLOR), SALT.

Shelf Life (days): 365
Starting from date of production when kept @ 0°F or below.

Preparation Method:

Conventional Oven: From frozen state, bake in preheated 350 degree f conventional oven for 8-10 minutes.

Convection Oven: From frozen state, bake in preheated 350 degree f convection oven for 5-8 minutes.

Microwave: On high for about 1 minute 15 seconds. Times given are approximate. Ovens vary. Adjust accordingly.

Master Case GTIN: 00071421037500

Nutrition Facts:

Serving Size: 1.20 OZ (34 g)
Servings Per Container: 250

Calories / Calories from Fat: 70 / 45

% Daily Value **

Total Fat	5 g	8%
Saturated Fat	1.5 g	8%
Trans Fat	0 g	
Cholesterol	25 mg	8%
Sodium	260 mg	11%
Total Carbohydrate	0 g	0%
Dietary Fiber	0 g	0%
Sugars	0 g	
Protein	7 g	
Vitamin A		0%
Vitamin C		0%
Calcium		2%
Iron		2%

** Percent Daily values are based on a 2,000 calorie diet. Your daily values may be higher or lower depending on your calorie needs.

The data contained on this spec sheet has been approved by Child Nutrition Labeling Technologist, Kimberly M Crocker.

Kimberly M. Crocker



AdvancePierre Foods • 9990 Princeton-Glendale Rd. • Cincinnati, Ohio 45246 • Phone: 1-800-969-2747 •
www.advancepierre.com
Date Generated: 7/6/2017

PREMIUM PERFECT SLICE™ FULLY COOKED CRISPY TURKEY BACON



Commodity Code: A-534/100124

2711-06

PRODUCT INFORMATION

Product Features

- Pre-cooked and pre-crisped for easy preparation
- Frozen
- 50 slices per package
- 600 slices per case
- 4.3 slices = 1 oz. mt./mt. alt.
- Utilizes dark and white meat
- Contains no allergens or gluten

Product Attributes

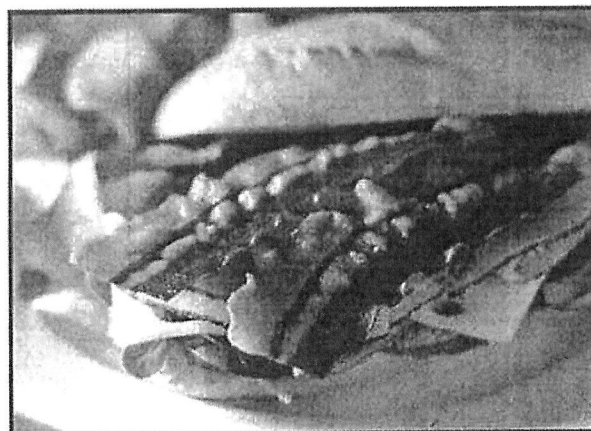
- Uniform slice size and shape
- Superior coverage in sandwich applications
- Traditional bacon appearance, flavor, texture
- Premium sandwich bacon
- Great alternative to traditional bacon
- Excellent yield

SPECIFICATIONS

Ship Container UPC:	10042222271100
Frozen Shelf Life:	365 days from pack date
Pallet Pattern:	6 x 8 = 48
Full Pallet:	
Net Weight:	360.00 lbs.
Gross Weight:	440.35 lbs.
Tare Weight:	80.35 lbs.
Catch Weight?	N

MASTER DIMENSIONS

Case Dimensions:	17.31"L x 15.81"W x 6.75"H
Cubic Feet:	1.069
Net Weight:	7.50 lbs.
Gross Weight:	9.174 lbs.
Tare Weight:	1.674 lbs.
Pack:	12/50 slices
Servings Per Case:	600 slices



LIST OF INGREDIENTS:

DARK TURKEY, WHITE TURKEY, WATER, SUGAR, SALT, CONTAINS 2% OR LESS, NATURAL SMOKE FLAVORING, SODIUM ERYTHORBATE, NATURAL FLAVORING, SODIUM NITRITE, VEGETABLE OIL.

BASIC PREPARATION INSTRUCTIONS*

ESTIMATED REHEATING TIMES:

Flat Top Grill: Preheat to 350°F. Do not oil grill. Place slices on grill single layer, turn bacon at 1 1/2 minutes, and heat an additional 1 1/2 minutes (3 minutes total). Remove and serve.

Conventional & Convection Oven: Preheat to 350°F. Do not oil the pan. Place 16 slices on baking sheet single layer, heat in oven for 7 to 8 minutes (conventional) and 4 to 4 1/2 minutes (convection). Remove and serve.

Commercial Microwave: Place 4-6 slices single layer on a paper towel lined microwave-safe plate. Heat on high for 15-20 seconds. Microwave ovens vary.

Note: The bacon will get crispier the longer it is heated. Adjust heating times to obtain your desired level.

Method	Temperature	Heating Time
Flat Top Grill	350° F	3 minutes
Conventional Oven	350° F	7-8 minutes
Convection Oven	350° F	4-4 1/2 minutes
Microwave Oven	High	15-20 seconds

*For preparation by a food preparation establishment only, according to the food code or equivalent.

I certify that the above information is true and correct, and that a 0.77 ounce serving of the above product (ready for serving) contains 1.0 ounces of cooked lean meat/ meat alternate when prepared according to directions.

I further certify that any VPP used in this product is authorized as an alternate food in the Child Nutrition Programs and its use conforms to Food and Consumer Service Regulations (7CFR part S 210, 225 OR 226, Appendix A).

Michelle Heveron
Signature
Michelle Heveron

Labeling & Nutrition Coordinator
Title
7/1/13

NUTRITIONAL INFORMATION

Svg Size (oz.)	Calories (Kcal)	Total Fat (g)	Sat. Fat (g)	Trans Fat (g)	Cholest. (mg)	Sodium (mg)	Carbs (g)	Fiber (g)	Protein (g)	Vit. A (%)	Calcium (%)	Vit. C (%)	Iron (%)
5g (1 slice)	20	1	0	0	5	95	0	0	2	0	0	0	0

SAUSAGE TURKEY LINK PRCKD FZ



COUNTRY RECIPE TURKEY SAUSAGE LINK FULLY COOKED 1.025 OZ

Item # 914738

Nutrition Facts

Serving Size : 1.000 OZ

Serving Per Container : 160

Amount Per Serving

Calories : 60.00 Calories from Fat : 35.00

	Per Serving	%Daily Value*
Total Fat	4.00	6.00 %
Saturated Fat	1.00	5.00 %
Trans Fat	0.00 g	
Cholesterol	30.00 mg	10.00 %
Sodium	100.00 mg	4.00 %
Total Carbohydrate	0.00 g	0.00 %
Dietary Fiber	0.00 g	0.00 %
Sugars	0.00 g	0.00 %
Protein	6.00 g	

	Per Srv		Per Srv
Vitamin A	0.00 %	Vitamin C	0.00 %
Calcium	2.00 %	Iron	2.00 %

*Percent Daily Values are based on a 2000 calorie diet. Your daily values may be higher or lower depending on your calorie needs.

	Calories	2,000	2,500
Total Fat	Less Than	65g	80g
Sat. Fat	Less Than	20g	25g
Cholesterol	Less Than	300g	300g
Sodium	Less Than	2400mg	2400mg
Total Carbohydrate		300mg	375mg
Dietary Fiber		25g	30g

Calories per gram

Fat 9	Carbohydrate 4	Protein 4
-------	----------------	-----------

School Equivalents

Serving Size 1EA(1.025Z,29G)

Meat/Meat Alternatives 1.000

Fruit/Vegetables

Grain/Bread

Milk

Child Nutrition* PFS

*Key: USDA=Item has USDA CN label

BG=Item is in the USDA Buyers Guide for Child Nutrition Program

PFS=Manufacturer has provided a Product Formulation Statement

Product Specifications:

MFG Product	UPC	Units/Case	UnitSize/Measure	Serving/Case
6140	10042222614006	160.0	1.025OZ	160

Brand	Class	PBH
JENNIE-O	MEATS	DELI/COOKED MEATS FROZEN

Gross Wt	Net Wt	Origin	Kosher	Child Nutrition
10.75	10.25			Y

Shipping Information:

LenXWidthXHt	TIHi	ShelfLife	TempZone	Wt Flag
16.56X11.56X4.63	910	365	FROZEN	N

Allergens:

Contains May contain

Handling Suggestions:

Always follow the directions on the packaging.

Benefits:

*Delivers Hearty, Satisfying Breakfast Protein to Those Customers Seeking Better-For-You Options *Texture and Flavor You Would Expect from Traditional Breakfast Sausage *Fully Cooked for Reduced Labor, Consistency and Food Safety Benefits *Frozen to Eliminate Most Shelf Life Concerns and Help Manage Costs

Additional Information:


PEANUT FREE INGREDIENTS

Ingredients:

Ingredients: Turkey, Seasoning (Salt, Spices, Sugar, Dextrose, Spice Extract, BHA, Propyl Gallate, Citric Acid), Water, Caramel Color.

Information concerning nutritional values and product ingredients, including major food allergens, is obtained solely from the vendor or manufacturer of the specific product, without any edits or filters by PERFORMANCENet or PFG. In most cases, the vendor or manufacturer submits nutritional values to PFG as rounded values and not actual values; therefore, laboratory test results for nutritional content of multi-ingredient menu items may be different from the calculated values using the data provided. PFG does not perform any independent evaluation, review, or screening of the vendor's or manufacturer's compliance with federal, state, or local labeling requirements, or other claims. PERFORMANCENet and PFG provide this information solely as a courtesy, and make no representation concerning its accuracy. Always read the product label before use. PERFORMANCENet and PFG do not warrant or guarantee the information provided by the third party information content providers and expressly disclaim any liability arising therefrom.

State Fair Turkey Corn Dogs, Mini, Whole Grain, .72 Ounce, Frozen, 10.75 Lb Bag, 1/Case

Item Number: 243202 

These miniature corn dogs are made with turkey, whole grain breeding, and are useful in a variety of applications.



Case (1/10.75 Pound Bag)

Nutrition

Based On: AP Corn Dog, Mini, WGrain, Tky, Lite, .7 Rounding: On

Ingredients

Turkey Franks: Turkey, Water, Mechanically Separated Turkey, *Vegetable Protein Product (Soy Protein Concentrate, Zinc Oxide, Niacinamide, Ferrous Sulfate, Copper Gluconate, Vitamin A Palmitate, Calcium Pantothenate, Thiamine Mononitrate [B1], Pyridoxine Hydrochloride [B6], Riboflavin [B2], And Cyanocobalamin [B12]), Corn Syrup, Salt, Contains 2% Or Less: Dextrose, Potassium Lactate, Flavorings, Sodium Phosphate, Sodium Diacetate, Paprika, Sodium Erythorbate, Extractives Of Paprika, Sodium Nitrite, May Also Contain Calcium Lactate (Calcium Alginate Casing). *Exceeds Amount In Regular Franks. Batter/Breading: Water, Whole Grain Wheat Flour, Sugar, Enriched Corn Meal (Yellow Corn Meal, Niacin, Iron, Thiamin Mononitrate, Riboflavin, Folic Acid), Contains 2% Or Less: Soy Flour, Soybean Oil, Leavening (Sodim Acid Pyrophosphate, Sodium Bicarbonate), Salt, Nonfat Dry Milk, Wheat Starch, Modified Food Starch, Honey Powder (Honey, High Fructose Corn Syrup Solids, Wheat Starch, Corn Syrup, Soy Flour, Calcium Stearate, Soy Lecithin), Whole Eggs, Natural And Artificial Flavor, Egg Yolks, Soy Lecithin, Sodium Caseinate. Cooked In Vegetable Oil. COMMON ALLERGENS PRESENT: Egg, Milk, Wheat, Soy. Prior to consuming the product, individuals with severe food allergies should confirm the ingredient information on the actual label of the product. Nutrition and Ingredient statement updated July 2019. This ingredient and nutrition information was provided by the third-party product manufacturer and/or supplier and was not in any way created or verified by GFS. The information is being passed on as a courtesy and for informational purposes only. GFS in no way guarantees the accuracy or completeness of this information and NO WARRANTIES ARE MADE OR IMPLIED; ALL IMPLIED WARRANTIES OF MERCHANTABILITY AND FITNESS FOR A PARTICULAR PURPOSE ARE EXPRESSLY EXCLUDED.

Nutrition Facts

Serving Size 4 each (76g)	
Amount Per Serving	
Calories 160	Calories From Fat 72
% Daily Value *	
Fat 8g	12%
Saturated Fat 1.5g	8%
Trans Fat 0g	
PolyUnsat. Fat	n/a
MonoUnsat Fat	n/a
Cholesterol 20mg	7%
Sodium 460mg	19%
Potassium	n/a
Carbohydrates 16g	5%
Fiber 2g	8%
Sugar 4g	
Protein 8g	16%
Vitamin A IU 0% Vitamin C 0% Calcium 4% Iron 6%	
* Based on a 2000 calorie diet	
Calories Per Gram:	
Fat: 9 Carbohydrates: 4 Protein: 4	

Product Information

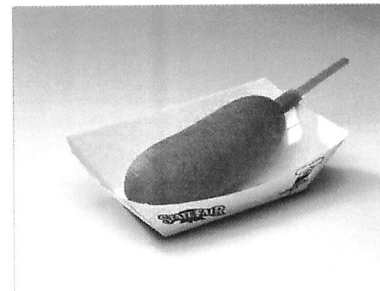


100% Whole Grain Lite Turkey Corn Dogs, 4 oz.

Product Code: SL09988-

UPC Code: 10071068099883

- Made with turkey hot dogs for a lowerfat alternative(K-12)
- Coated with our whole grain-rich honey-sweetened cornbread batter for a golden brown appearance
- Easy and fun to eat; great as a meal or snack on-the-go
- CN Labeled. Each 4.0 oz. serving provides 2.0 oz. equivalent meat/meat alternate and 2 servings of bread alternate



PREPARATION

1. Fully cooked; to heat corn dog: Conventional Oven – Heat at 375oF, 22 minutes if thawed, 40 minutes if frozen. Convection Oven – Heat at 350oF, 17 minutes if thawed, 25 minutes if frozen. Microwave (1000 watt high power) – 60 seconds if thawed; 90 seconds if frozen. Deep Fryer – Heat at 350oF, 6 minutes if thawed, not recommended if frozen. 2. Heat to internal temperature of 160oF. Hold at 140oF or above. 3. Heating times may vary with each oven.

CASE PACK

Not Currently Available

MASTER CASE

Gross Weight	19.02 LB	Width:	12 IN
Net Weight	18.00	Length:	18.38 IN
Cube:	0.91	Height:	7.13 IN

PALLET CONFIGURATION

Ti:	8	Hi:	5
-----	---	-----	---

STORAGE

Shelf Life:	270
Storage Temp:	
Storage Method:	

INGREDIENTS

Not Currently Available

Nutrition Facts

Serving Size: 1 piece (113g)
Servings Per Container: Bulk 72 ct 4.0 oz

Amount Per Serving
Calories 250
Calories from Fat 90

	% Daily Value*
Total Fat 10g	15%
Saturated Fat 2g	10%
Cholesterol 25mg	8%
Sodium 760mg	32%
Total Carbohydrate 30g	10%
Dietary Fiber 3g	12%
Sugars 10g	
Protein 11g	%

Vitamin A 0%
Calcium 6%
Vitamin C 25%
Iron 10%

* Percent daily values are based on a 2,000 calorie diet. Your daily values may be higher or lower depending on your calorie needs.

To obtain a signed copy of the CN statement for this item, please contact the Tyson Food Service Concierge via e-mail or call 1-800-248-9766.

tysonfoodservice.com
1-800-24-TYSON

©2014 Tyson Foods, Inc. Trademarks and registered trademarks are owned by Tyson Foods, Inc. or its subsidiaries. Information valid as of 7/6/2017.

Smokie Grill® Pork Rib Pattie With Honey BBQ Sauce

Item #: 3717

Product Description: Fully cooked, boneless, chopped pork rib pattie. Glazed with a generous amount of honey barbeque sauce. Firm, meaty bite. Soy added. Thick, naturally rounded ribs with char highlights. CN labeled. Commodity processed product.

Technical Name: Fully Cooked Flame Broiled Rib Shaped Pork Patty With Honey Barbecue Sauce Smoke Flavoring Added

Brand: Pierre

Product Details

Data Generated: 7/6/2017
Data Valid As Of: 6/20/2017
Packing Type: BULK-LINER
Pieces Per Case: 100
Portion Size (oz.): 3.25
Case Net Weight (lb.): 20.31

Case Dimensions: Width: 13.00
Length: 15.88
Height: 6.63
Case Cube: 0.79

Cases / Pallet: 54
Case TiHi: 9 x 6

Credit (CN): 2 OZ MMA PORK
Equivalent Grain: -

Ingredients:

INGREDIENTS: Ground Pork (Not More Than 30% Fat), Honey Barbecue Sauce: (High Fructose Corn Syrup, Distilled Vinegar, Tomato Paste, Corn Syrup, Honey, Molasses, Water, Salt, Natural Flavor, Modified Corn Starch, Natural Hickory Smoke Flavor, Spices, Onion Powder, Garlic Powder, Sodium Benzoate (Preservative), Caramel Color, Sugar), Water, Textured Vegetable Protein Product: (Soy Protein Concentrate, Caramel Color, Zinc Oxide, Niacinamide, Ferrous Sulfate, Copper Gluconate, Vitamin A Palmitate, Calcium Pantothenate, Thiamine Mononitrate (B1), Pyridoxine Hydrochloride (B6), Riboflavin (B2), Cyanocobalamin (B12), Seasoning: (Tomato Powder, Dextrose, Brown Sugar, Artificial Vinegar (Malic Acid, Sodium Acetate, Lactose, Fumaric Acid, Artificial Flavorings), Powdered Worcestershire Sauce (Corn Syrup Solids, Salt, Garlic Powder, Sugar, Spices, Soy Sauce Solids (Wheat, Soybeans, Salt, Maltodextrin, Caramel Color), Tamarinds, Flavor), Spices, Spice Extractive, Onion Powder, Smoke Flavor, Garlic Powder), Honey, Salt, And Sodium Phosphates. CONTAINS: WHEAT, SOY, MILK

Shelf Life (days): 365
Starting from date of production when kept @ 0°F or below.

Preparation Method:

Conventional Oven: Frozen product: preheat oven to 350 degrees f. Heat for 13 minutes.

Convection Oven: Frozen product: preheat oven to 350 degrees f. Heat on a pan for 11 minutes.

Microwave: Frozen product: microwave on high for 2 minutes.

Master Case GTIN: 00071421037173

The data contained on this spec sheet has been approved by Child Nutrition Labeling Technologist, Kimberly M Crocker.



AdvancePierre Foods • 9990 Princeton-Glendale Rd. • Cincinnati, Ohio 45246 • Phone: 1-800-969-2747 •
www.advancepierre.com
Date Generated: 7/6/2017

Nutrition Facts:

Serving Size: 3.25 OZ (91 g)
Servings Per Container: 100

Calories / Calories from Fat:	210 / 110
	% Daily Value **
Total Fat 12 g	18%
Saturated Fat 4.5 g	23%
Trans Fat 0 g	
Cholesterol 45 mg	15%
Sodium 660 mg	28%
Total Carbohydrate 12 g	4%
Dietary Fiber 1 g	4%
Sugars 9 g	
Protein 13 g	
Vitamin A	6%
Vitamin C	2%
Calcium	2%
Iron	6%

** Percent Daily values are based on a 2,000 calorie diet. Your daily values may be higher or lower depending on your calorie needs.

LAND O LAKES® PREPARED 50% REDUCED FAT MACARONI AND CHEESE WITH WHOLE GRAIN



Product Code: 43277 | SCC: 10034500432778 | UPC: 00034500432771

PRODUCT DESCRIPTION

Land O Lakes® Prepared 50% Reduced Fat Macaroni and Cheese with Whole Grain is easily customized with stir ins to create endless flavor possibilities, and just as delicious on its own. It's a creamy kid-favorite

PRODUCT FEATURES

- Heat and serve
- Outstanding holding characteristics
- Whole Grain Noodles
- Reduced Fat
- 2 M/MA
- 1 oz. eq. grain

SUGGESTED USE

Heat and serve entrée or side that can be served as-is or with additional meat and vegetable mix-ins for maximum versatility.

CASE INFORMATION

- Case Pack / Weight:6/5 lb
- Pallet Tie:7
- Pallet High:9
- Total Pallet:63
- Gross Weight:32.5 lb
- Net Weight:30 lb
- Length:18.88 in
- Width:12.63 in
- Height:5.63 in
- Case Cube:77691 Cu. Ft

SHELF LIFE & STORAGE

- Guaranteed Shelf Life:90 days
- Maximum Shelf Life:365 days
- Storage: Do Not Refreeze, Keep Frozen, Refrigerate After Opening.

NUTRITIONAL INFORMATION

Serving Size:	2/3 cup (170g; 6oz)
Serving Per Case:	80
Amount Per Serving	
Calories	290 kcal
*Total Fat 11 g	14 %
Saturated Fat 6 g	30 %
Trans Fat 0 g	
Cholesterol 30 mg	10 %
Sodium 980 mg	43 %
Total Carbohydrate 31 g	11 %
Dietary Fiber 2 g	7 %
Sugars 6 g	
Added Sugars 0 g	0 %
Protein 17 g	29 %
Vitamin D 0 mcg	0 %
Calcium 419 mg	30 %
Iron 1 mg	6 %
Potassium 210 mg	4 %

* The percent daily values are based on a 2,000 calorie diet. Your daily values may be higher or lower depending on your calorie needs.

INGREDIENTS

Cooked Enriched Whole Grain Pasta (water,whole durum wheat flour, semolina, egg whites, niacin, ferrous sulfate, thiamin mononitrate, riboflavin, folic acid), Reduced Fat American Cheese (cultured pasteurized milk and skim milk, salt, sodium phosphate, contains less than 2% of lactic acid, annatto and oleoresin paprika (color), vitamin A palmitate, enzymes), Water, Maltodextrin, Contains Less Than 2% of Natural Flavor, Autolyzed Yeast Extract, Butter (cream, salt), Food Starch-Modified, Xanthan Gum.CONTAINS: Egg, Milk, Wheat

Kosher: No

** 0 g Trans Fat per Serving, 50% Less Fat than Regular Land O' Lakes Macaroni and Cheese, Contains 16 g Fat compared with 33 g Fat of regular Macaroni and Cheese per Serving, Made with 51% Whole Grain Pasta, Reduced Fat, See Nutrition Facts for Fat, Saturated Fat & Sodium

LAND O LAKES
A CREAMY KID-FAVORITE

Land O'Lakes offers exceptional variety and quality for your menu so you can feel good about providing great-tasting options to keep your customers coming back for more.